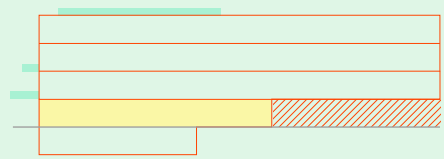


# Podium Floorplans

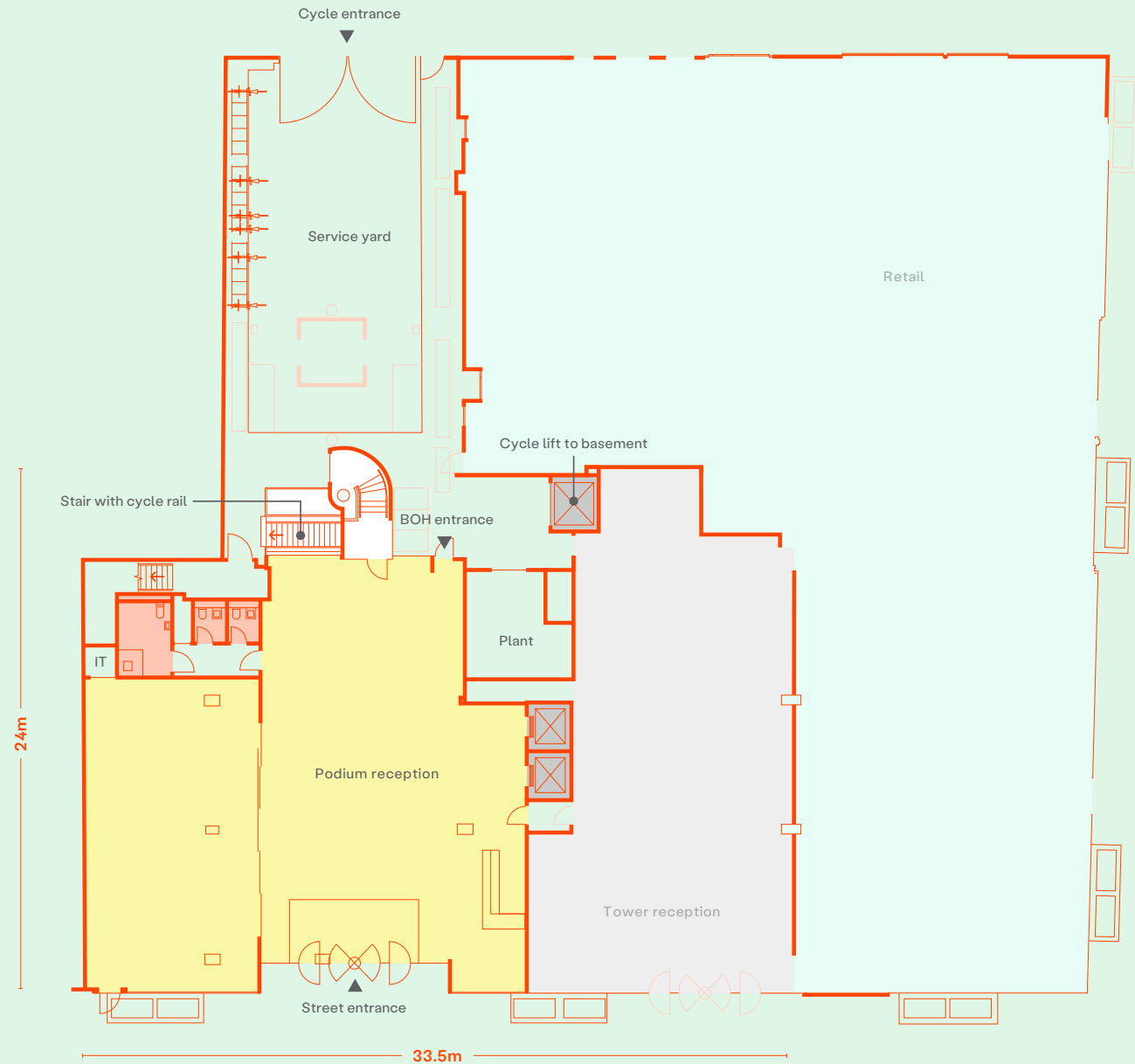
**met**

# Podium Ground floor

3,577 ft<sup>2</sup>



## Floorplans



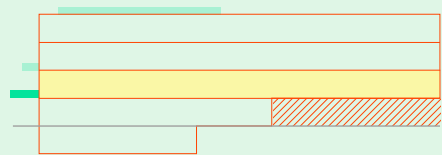
Tottenham Court Rd

- Podium reception
- Core area
- Retail
- Tower reception
- Toilets
- Lift

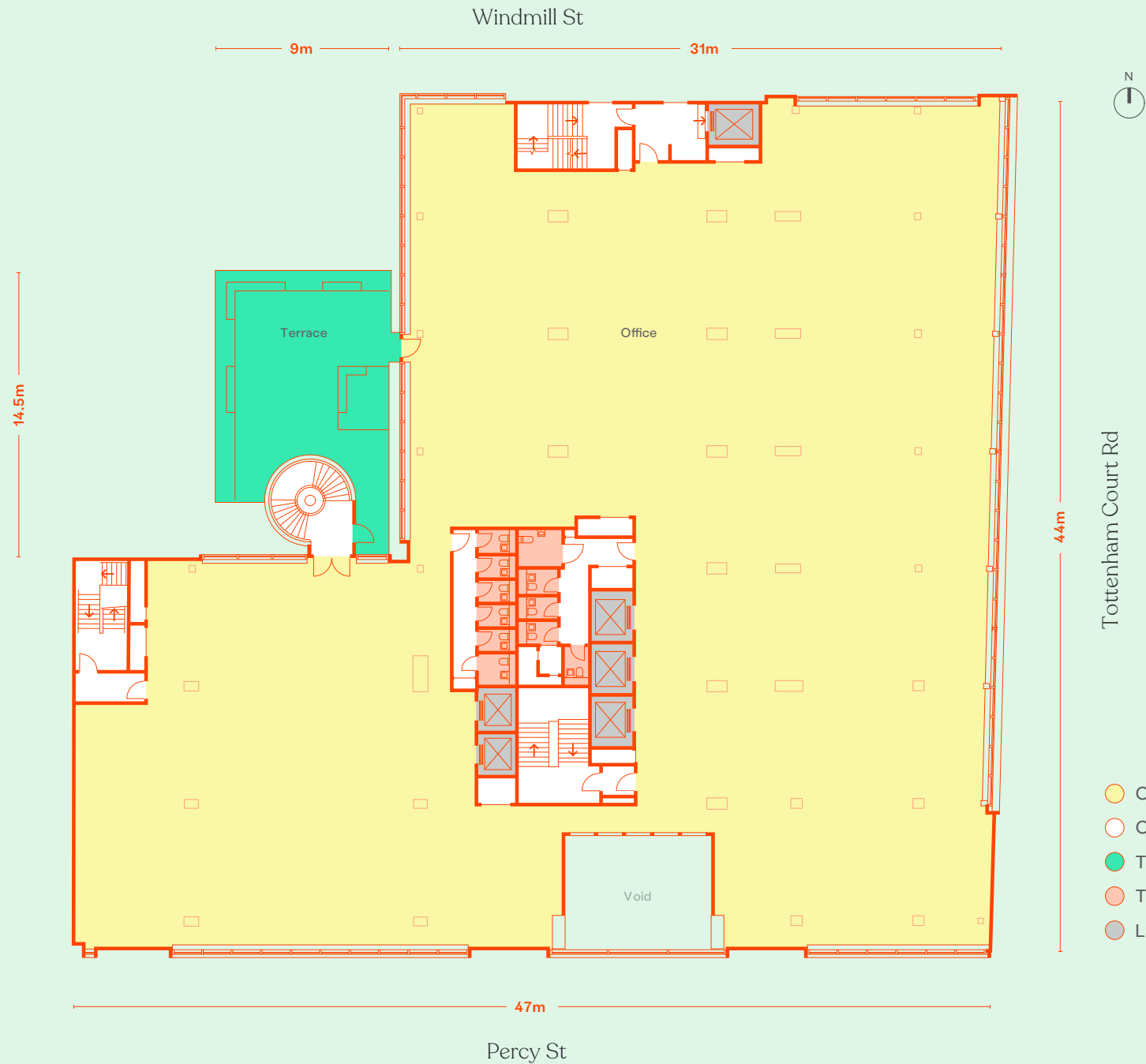
# Podium Floor 1

Office 14,987 ft<sup>2</sup> Terrace 530 ft<sup>2</sup>

**Total**  
15,517 ft<sup>2</sup>



Floorplans

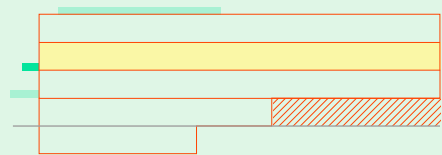


- Office
- Core area
- Terrace
- Toilets
- Lift

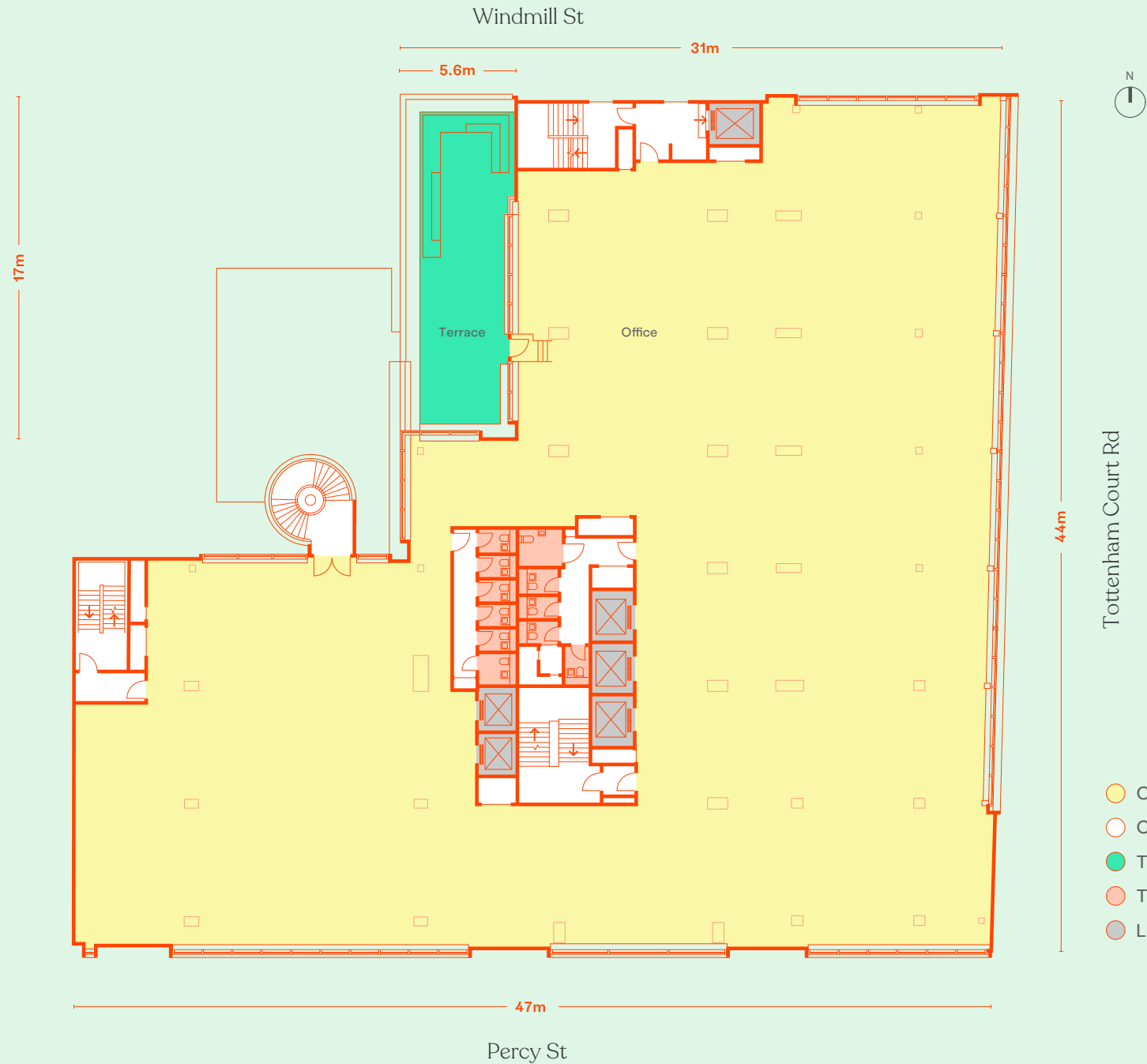
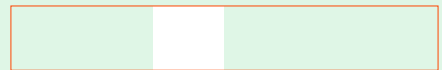
# Podium Floor 2

Office 14,358 ft<sup>2</sup> Terrace 789 ft<sup>2</sup>

**Total**  
15,147 ft<sup>2</sup>

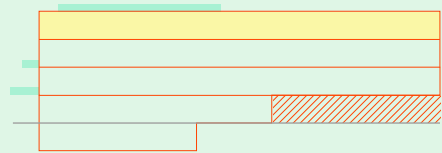


Floorplans

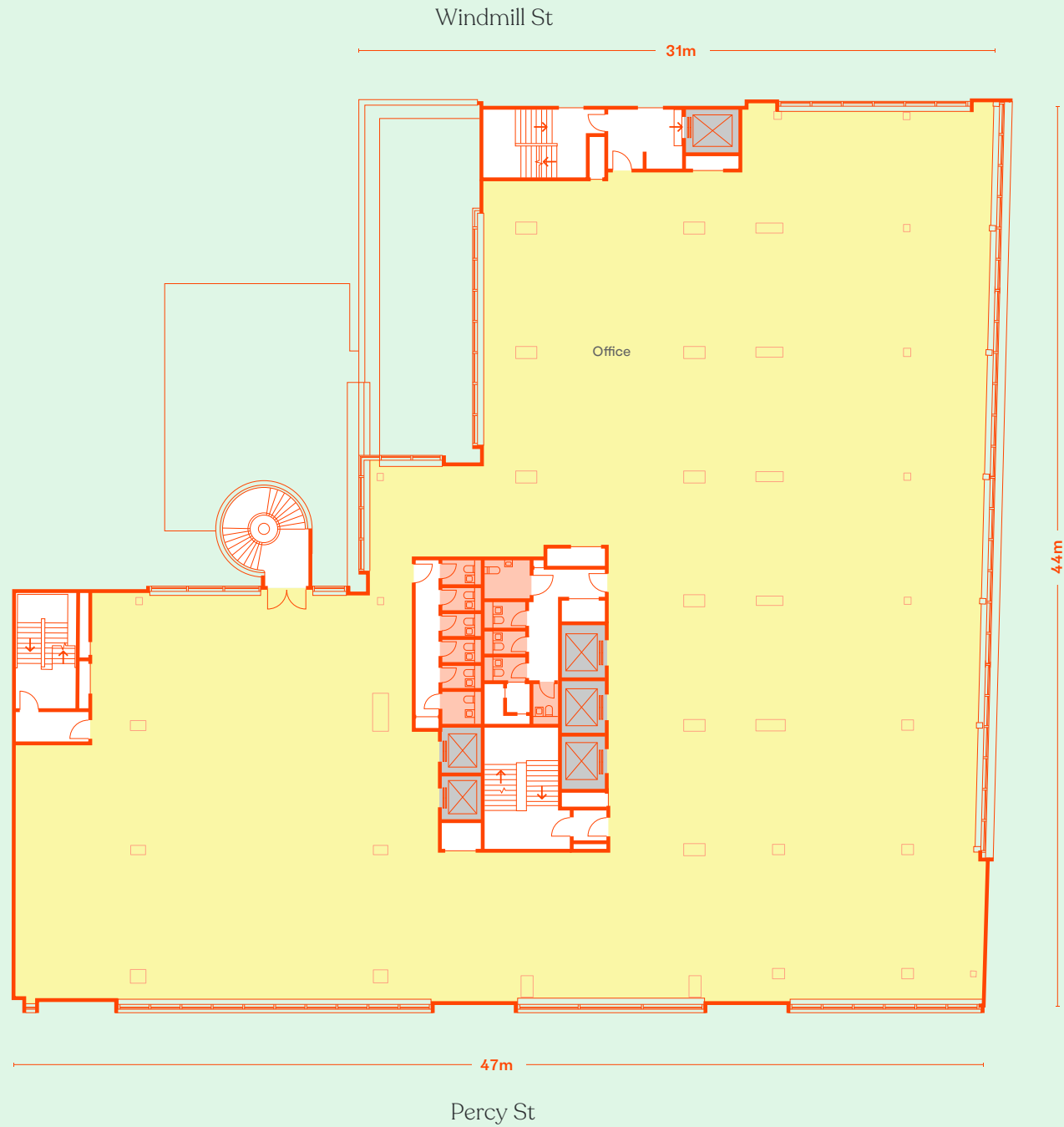
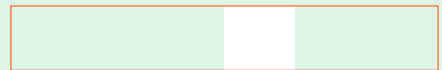


# Podium Floor 3

Office  
14,341 ft<sup>2</sup>



Floorplans



Tottenham Court Rd

44m

- Office
- Core area
- Toilets
- Lift

Windmill St

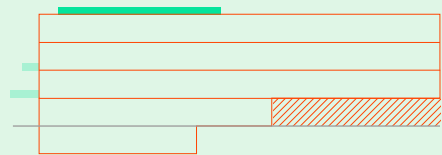
31m

Percy St

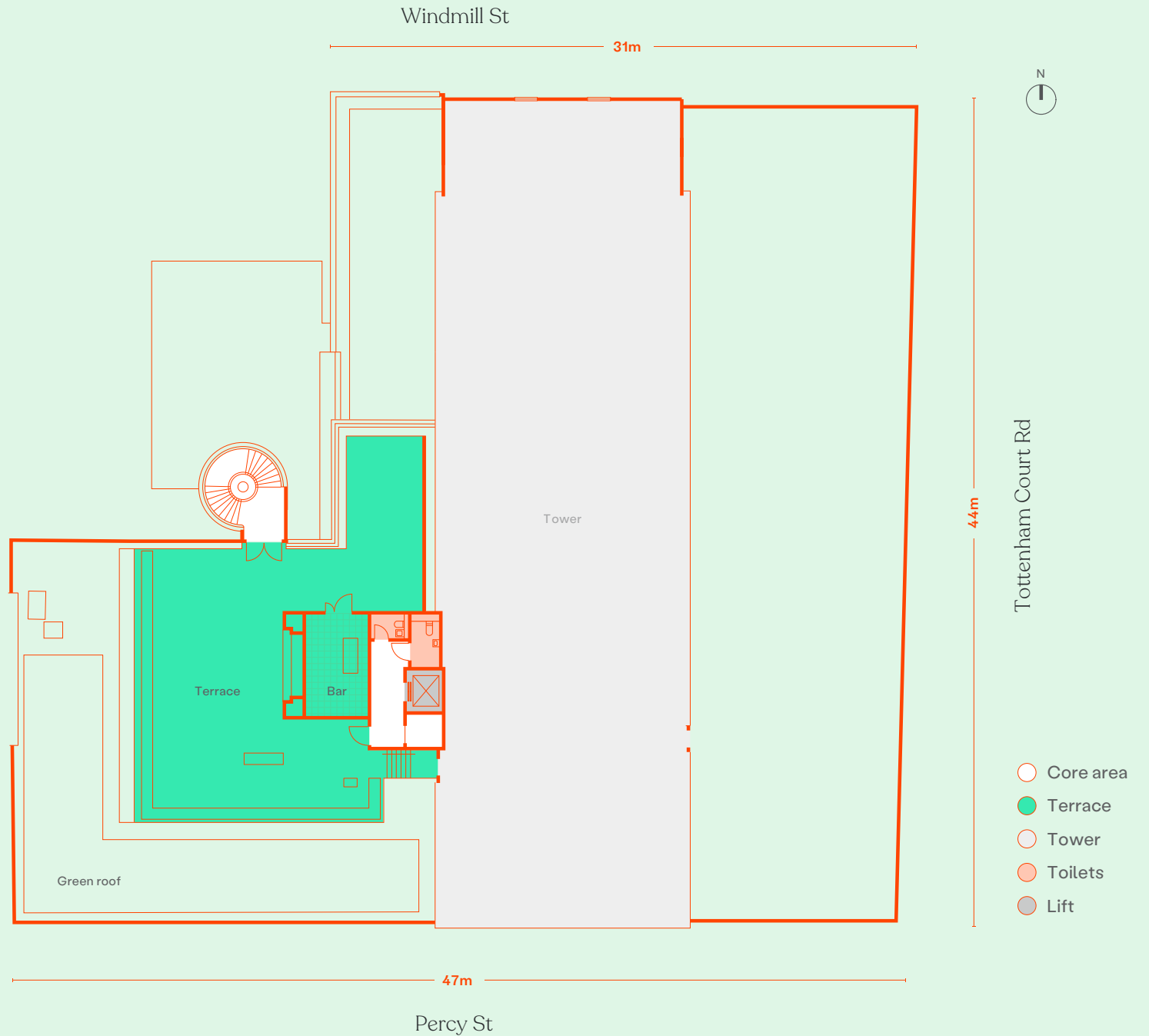
47m

# Podium Roof terrace

Terrace  
1,638 ft<sup>2</sup>



## Floorplans



# Podium Basement

Cycle facilities

2,433 ft<sup>2</sup>

111  
total cycle spaces

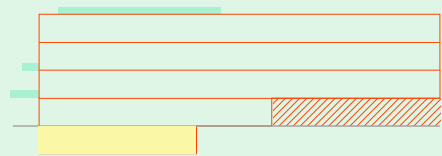
27  
folding cycle lockers

10  
horizontal racks

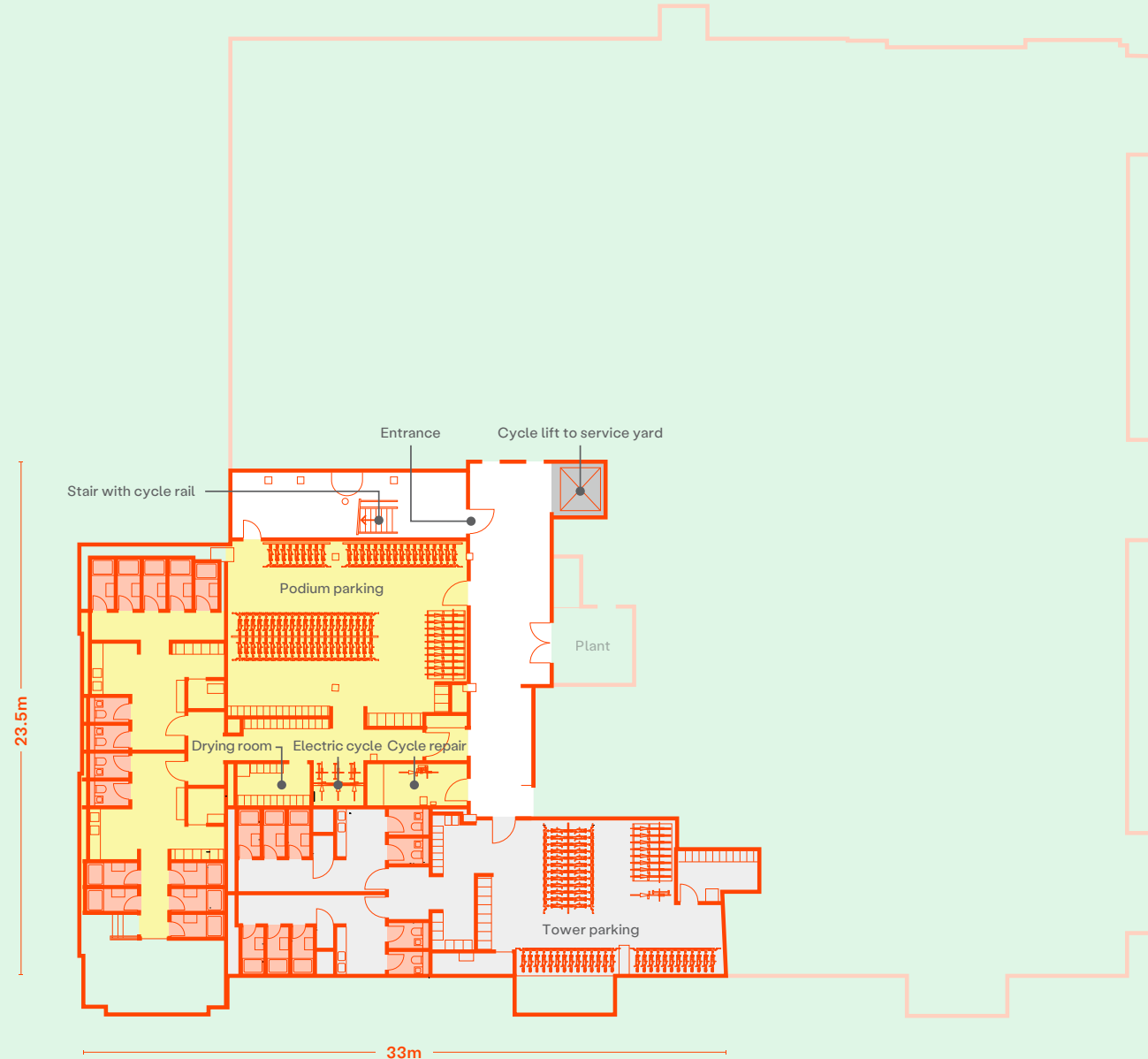
71  
Vertical racks

3  
electric cycle spaces

123  
Lockers



Floorplans



Tottenham Court Rd

- Podium cycle parking
- Core area
- Tower cycle parking
- Toilets / showers
- Cycle lift